

2024 - ANNOUNCEMENT | NEW SERIES P042066

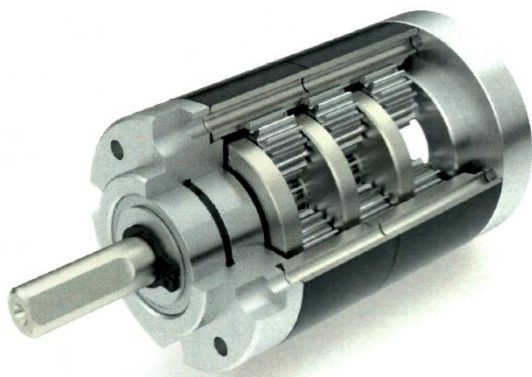


Technical data	Series P042066
Diameter	42 mm
Voltage	24 VDC
Speed	11 to 800 rpm
Rated torque	0.5 to 13.2 Nm
Notices	<i>We modify, mount and deliver motors with any add-on parts on demand.</i>

>> **Series P042066** >> [online product filter](#)

Two variants of this BLDC planetary gear motor

Gearbox with two ball bearings and reinforced planetary gears



Gearbox with two ball bearings and reinforced planetary gears, first stage helical and made of plastic



Benefits of this variant:

- High torques
- High efficiency
- Low gear backlash



Benefits of this variant:

- High torques
- High efficiency
- Low gear backlash
- Low noise

JBW's online product filter for planetary gear motors

Our [online product filter](#) provides you with optimal assistance in narrowing down the selection of suitable BLDC gear motors. You just specify your requirements for your individual application and you will receive a list of BLDC motors that meet the criteria and that you can then compare with each another.

PRODUCT FILTER

Gear	Type	Series
<input type="text" value="Planetary Gear"/>	<input type="text" value="BLDC"/>	<input type="text" value="P042066"/>
Voltage (VDC)	Rotation speed (UPM)	Torque (Nm)
<input type="text" value="-- please choose --"/>	<input type="text" value="From"/> <input type="text" value="To"/>	<input type="text" value="From"/> <input type="text" value="To"/>

Planetary gear motors – with all associated installation and connection details

JBW provides you with the associated schematic drawings and information on the circuit and connection for all planetary gear motor series.

Motor characteristic curves

JBW supplies you with the characteristic curve for each planetary gear motor as it has been tested under load on our own motor test bench as standard. If desired, we will recreate your application with the specific load variables.

Motor curve of BLDC Planetary gear motor P042066.025.080

